

The Hydro Inflation Core Ejector Gun is used with the Air-powered Diaphragm Pump. The Hydro Inflation Core Ejector Gun will remove and install the core housing while mounted on the valve stem base. The tool has additional adapters to be used with small stems, tractor stems, and large bore stems.

The Hydro Inflation Core Ejector Gun is an all-brass tool that permits fast filling of tires with liquid ballast solutions. Includes bushings to fit tube and tubeless versions of standard, large, and super-large-bore air/liquid valves with removable core housings.



1. The Hydro Inflation Core Ejector Gun apparatus will thread over the base of the air/liquid TR218/220A type valve stems.



2. The union can be installed while connected to the rest of the Hydro Inflation Core Ejector Gun, or it can be installed separately.



3. To remove the core housing, gently push on the end of the hand wheel and turn counter-clockwise. This will remove the core housing from the base of the stem.



4. After several revolutions, pull back on the hand wheel. This will pull the core housing from the base to the back of the ejection tool, making the tire ready for filling or removal of liquid.

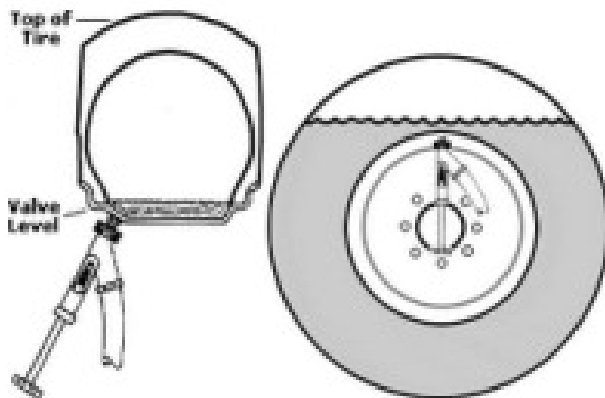
What happens inside?



The sleeve is split to slide over the core housing.



Pushing on the hand wheel forces the sleeve over the housing.



These two drawings illustrate the idea of "valve level." With the tire positioned so that the valve is at the top of the rim, the tire is approximately 75% filled with liquid when the liquid reaches "valve level."

Using adapters

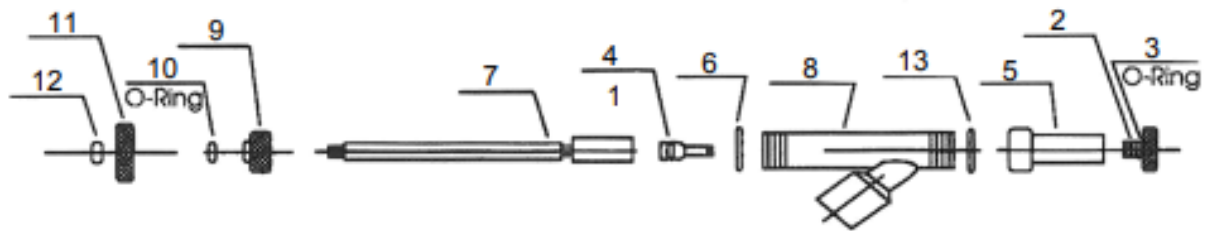


When the tire has a TR-13 or TR-15 stem, install the small bore core removal plug in the end of the core ejector. This will allow you to remove and reinstall just the valve core. You will also need to use the adapter for the standard valve.



This picture shows the adapter and the valve core.

Parts List For
Calcium Ejector Gun
Model 15096



	AME Part Number	Description	Quantity
1	15096-134	Large Bore Core Remover	1
2	15096-135	Adapter for Standard Valve (Equipped with 15096-136)	1
3	15096-136	O-Ring for 15096-135	1
4	15096-137	Standard Valve Core Remover	1
5	15096-138	Ejector Union (Equipped with 15096-146)	1
6	15096-139	Gasket	1
7	15096-140	Stem	1
8	15096-141	Adapter Body	1
9	15095-142	Stem Sealing Nut	1
10	15096-143	O-Ring for 15096-142 (Stem Seal)	1
11	15096-144	Hand Wheel	1
12	15096-145	Lock Nut	1
13	15096-146	Teflon Gasket	1